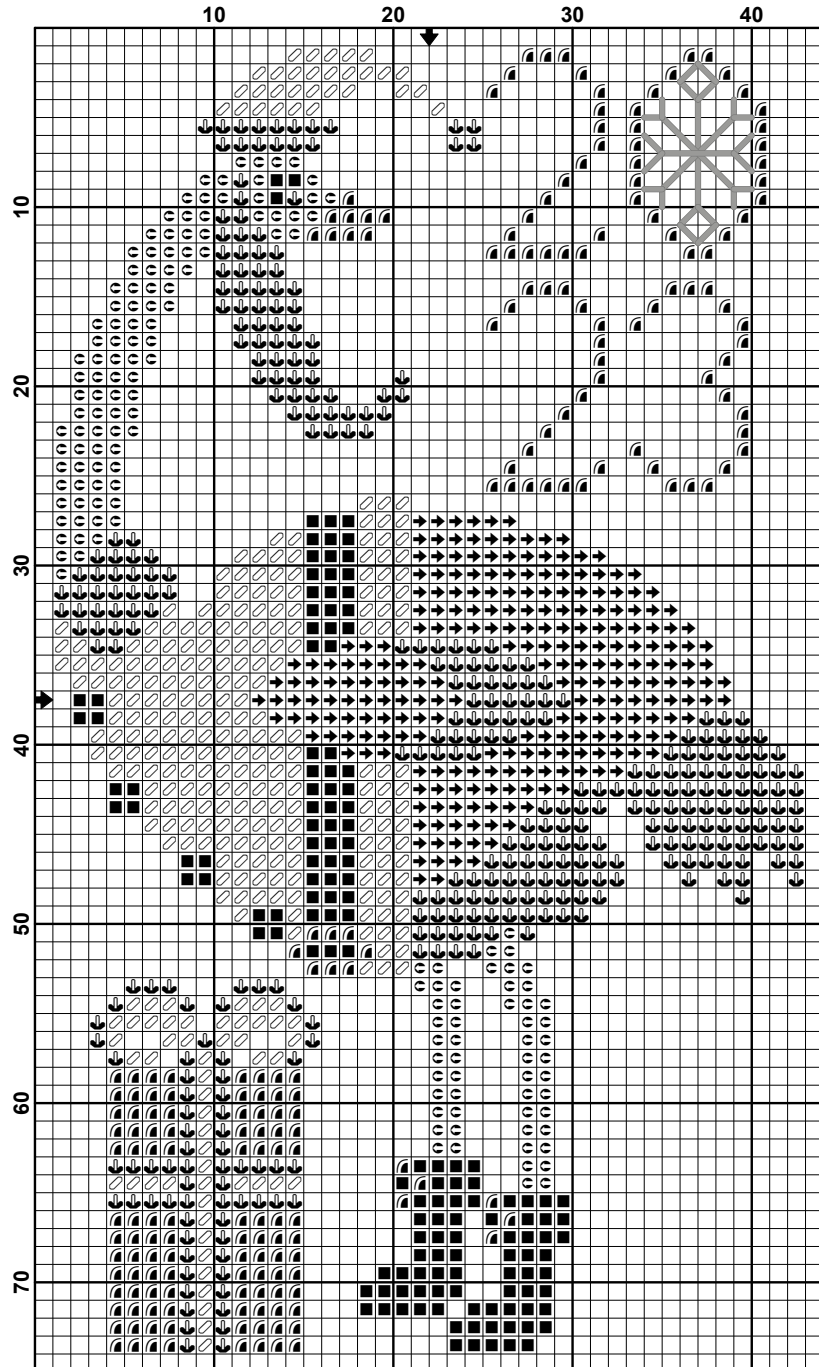


THE BLUE FLOWER

Original design by Jeannine McGowan - copyright 2023 The Blue Flower



'Holiday Ostrich

Threads Used:

- | | |
|------------|------------|
| ■ DMC 310 | ☉ DMC 3771 |
| ☒ DMC 729 | ➔ DMC 3790 |
| ◊ DMC 0022 | ⬇ DMC 3865 |

Straight stitch the snowflake with DMC 3865.

Free chart - Christmas 2023.
Original design by The Blue Flower
The model is stitched on 40 count Winter
Brew from R&R Reproductions.